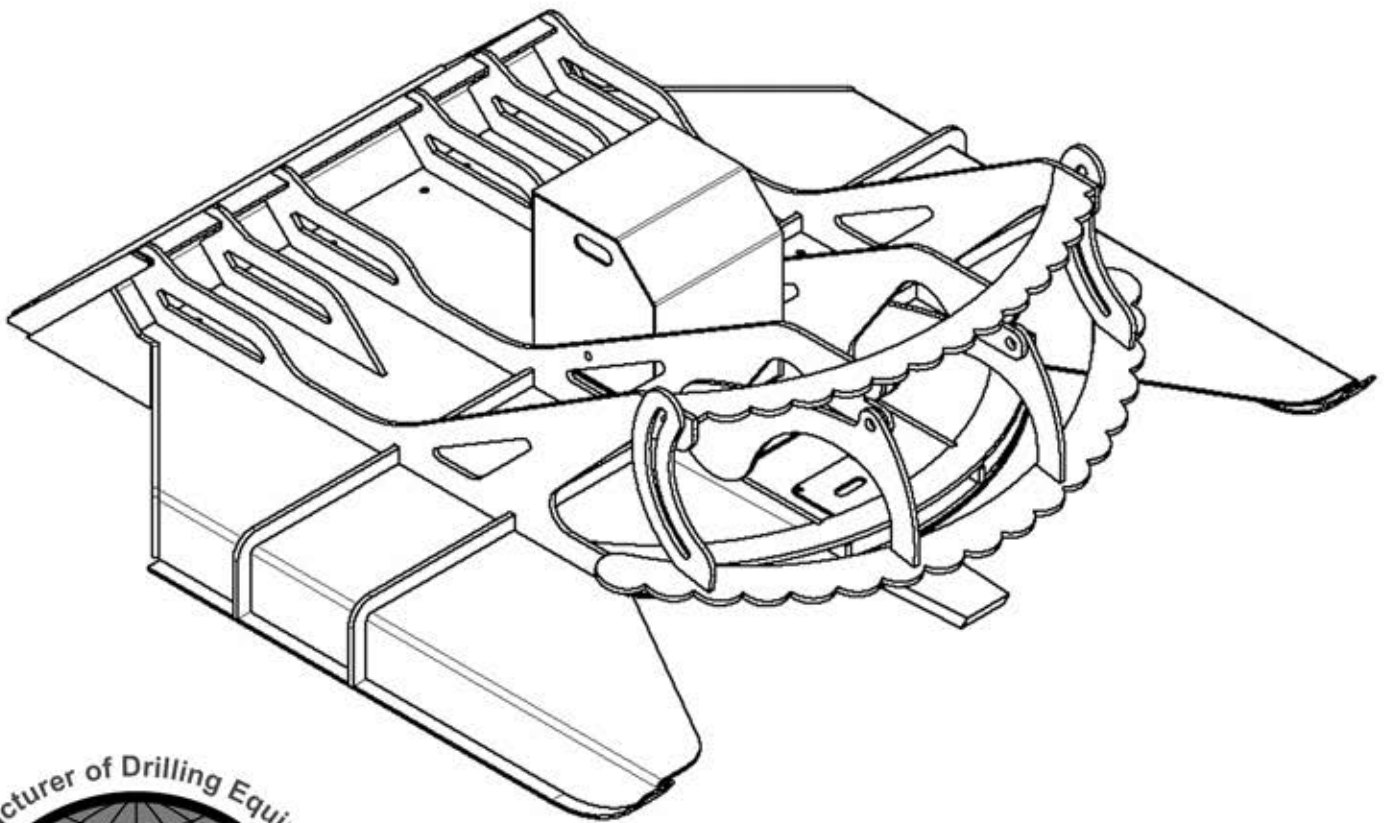


GROUND FORCE

BRUSH BEAVER

HAR-XHD7200 & HAR-XHD7800

Operation and Safety Manual



Harleman Manufacturing

117 South St. James

El Dorado Springs, MO 64744

(office) 417-876-3011

(fax) 417-876-3091

**BULLET PROOF GLASS
DOOR REQUIRED ON
MACHINE**

Table of Contents



1. Safety

Safety Symbols & Equipment Signs.....	01
General Safety Instructions..	02

2. Attaching the machine

Part A.....	03
Part B.....	04

3. How to operate.....05

4. Storage.....05

5. How to change oil.....06

6. Spindle Drive Assembly

Blueprint.....	07
Spindle Drive Installation Blueprint.....	08

Safety Symbols & Equipment Signs



This is the safety alert symbol. When you see this symbol on your equipment or in this manual, be alert to the potential for personal injury or injury to others.



This symbol means to take notice. Following this symbol is useful and important information.

Warning



Before using your new machine, you and all other operators should completely read through this manual. Failure to fully understand how to operate this machine and take safety precautions could lead to serious injury and death.



These signs should remain on the machine always, **DO NOT** remove. If the signs ever becomes lost or damaged they should be replaced.

DANGER

**ROTATING BLADES
STAY BACK
1000 FEET!**

General Safety Instructions



Read through entire manual



Always keep the manual in a safe and easily accessible place.



Make sure to replace all missing or damaged decals.



Do not make unauthorized modifications to machine which could decrease it's stability and life or cause injury and possibly death. We also encourage you to only use authorized replacement parts from Harleman Mfg. which were made specifically for this machine.



If there is any part of this guide you do not understand feel welcome to call our shop at any time. The number is 417-876-3011.



Never use alcohol or drugs while using this machine, doing so could lead to serious injury or death.



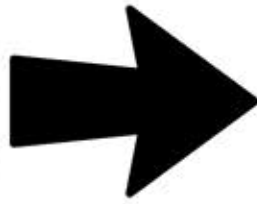
Anyone under the age of 18 should not operate this machine.



Always wear relevant safety apparel. If using a skidsteer with an open cab you should always wear safety glasses and protective head gear. You never know when stray debris may ricochet your way.

Attaching the machine

Part A



Attaching the machine

Part B



The skid steer must be equipped with a compatible Standard Universal Quick Mount Hitch and Front Auxiliary Hydraulics to connect and operate the machine.



The skid steer must be equipped with an Operator Front Protective Door. Serious injury or death can result from a thrown object hitting an unprotected operator.

Securing Equipment to the Skid Steer

1. With the engine completely shut down and the parking brake set, rotate the skid steer latch handles upward to the unlatched position. The latch handles must be completely raised to fully retract the hitch lock pins.
2. Start the skid steer and tilt the hitch mounting plate forward while guiding the mounting plate crest under the attachment saddle of the mower. Raise and roll back the mounting plate until the mower hitch plate is securely seated flat against the skid steer mounting plate.
3. With the mower fully supported by the skid steer boom, lower the mower to ground level. Slightly tilt the front of the mower head upward about 2" from ground level. Turn off the engine, set the parking brake, and exit the skid steer. Push both latch handles downward to engage the hitch pins into the mower hitch retaining tabs. Now the mower hitch is securely attached to the mounting plate of the skid steer.

Attaching the Hydraulic Lines

1. Before you connect hydraulic lines to the skid steer be sure that the hydraulic lines and quick couplers are of the same size and type.
2. With the skid steer completely shut down and secured in position and the mower resting at ground level, relieve auxiliary hydraulic pressure by moving the control levers back and forth several times.
3. When connecting the skid steer hydraulic lines to the mower, keep hoses, quick couplers, and swivels free of contamination. Clean dirt and other debris from the connections with a clean rag to prevent contamination of the hydraulic oil.
4. The mower will only operate with oil fed through the mower in one direction. If the mower does not operate when the auxiliary hydraulics are engaged, oil is probably being fed through the motor in the reverse direction. To correct this problem, reverse the hydraulic line connection between the mower and skid steer and engage the hydraulics again or try engaging the auxiliary hydraulic lever in the opposite direction.

How to operate

1. This machine was designed to cut brush and trees up to a **MAXIMUM 10" diameter**.
2. Proper operating speed for equipment will vary depending upon the height, density, and type of the material to be cut.
3. Stay alert and watch for power lines and solid ground objects.
4. Choose a driving pattern that provides the maximum pass length and minimizes turning.
5. If mowing in reverse, operate the skid steer and mower at a reduced ground speed to ensure skid steer and mower control is maintained.



For safety reasons never operate this machine with the deck up.



! Properly Cleaning and Storing your new machine is critical to maintaining it's appearance and ensuring years of service.

Storage

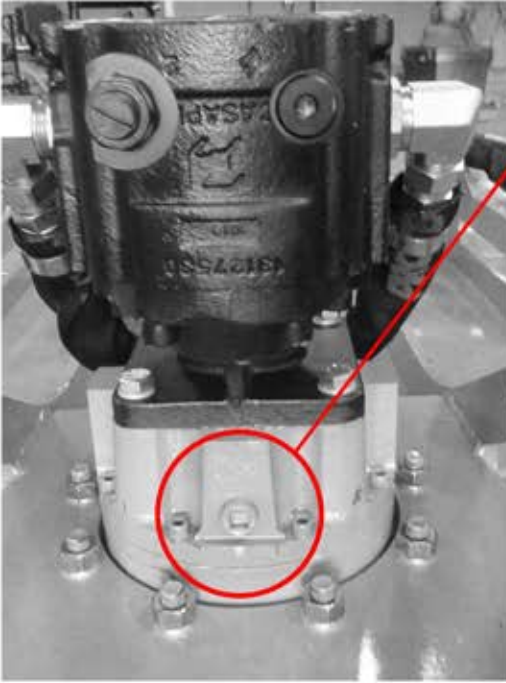
1. Thoroughly clean all debris off the mower to prevent damage from rotting grass and standing water.
2. Check the mower for worn and damaged parts periodically. Perform repairs and make replacements immediately to prevent potential hazards.
3. Make sure to store the mower in a clean, dry place with the mower housing resting securely on blocks or at ground level.
4. Keep the hydraulic hose ends from sitting in water, dirt and other contaminants. Connect the mower's hydraulic lines together to prevent dirt and other contamination from entering the hydraulic system.
5. You can use spray touch-up enamel where necessary to prevent rust and to maintain the appearance of the mower.



When not in use always make sure the machine is positioned flat on the ground.



How To Change Oil



FILL PLUG

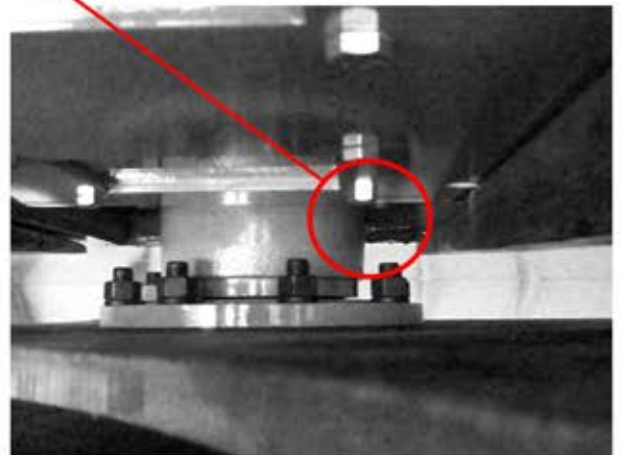
Fill with "1 Qt." of oil.
(80-90 Full Synthetic)

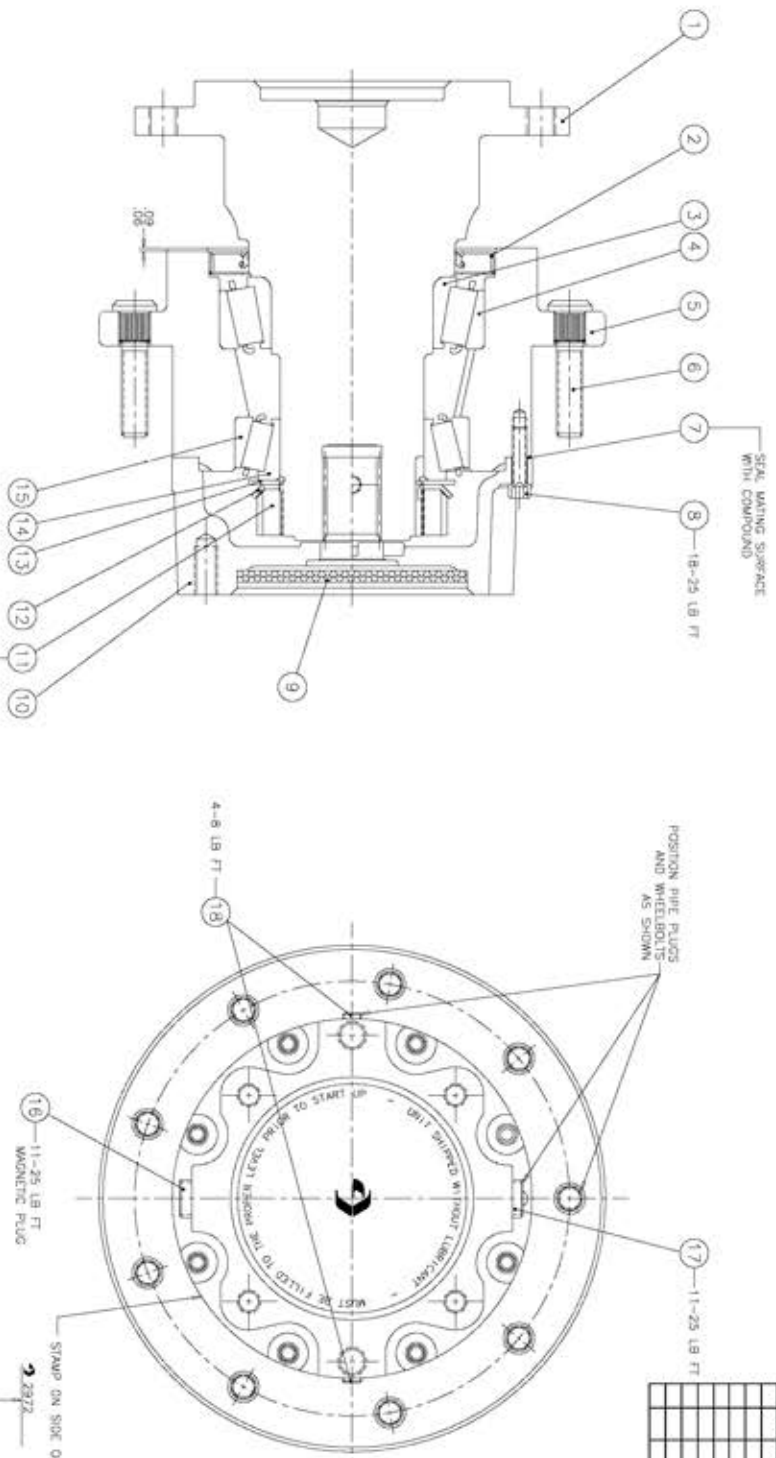
Since our equipment
ships ready to use
there is no need to
fill the drive with oil.
The drive is prefilled
prior to shipping.



DRAIN PLUG

Change oil every 500
hours.



[illegible]

NOMINAL SETTING RANGE: -003 to -004 FEET/DO
 USING THE APPROPRIATE FIXTURES PRESS THE BRAND
 CODE ONTO THE SPINDLE/SHUTTLE TO A FORCE OF
 8000 TO 8200 LBS WHILE PRESSING CONTINUOUSLY
 ROTATE OR OSCILLATE THE REPEAL
 INSTALL THE FIRST MASTER LOCKWASHERS AND NUT
 TORQUE NUT TO 80-70 LB FT AND SECURE
 LOCKNUT BY BEHIND LOCKWASHERS TAP INTO ONE
 OF FOUR LOCKNUT SLOTS IF NO TAG ALINGS WITH
 SLOT NUT MAY BE TIGHTENED UNTIL ONE OF THE
 SLOTS ALINGS WITH LOCKWASHER TAG

ITEM	PART NO	DESCRIPTION	QTY
18	03-04-101-09	PLUG-PIPE	2
17	03-04-101-01	PLUG-PIPE	1
16	14-00-052-002	PLUG-PIPE	1
15	613314	BEARING-CUP	1
14	613315	BEARING-CONE	1
13	619320	WASHER-THRUST	1
12	606003	WASHER-LOCK	1
11	614922	NUT-LOCK	1
10	6036123	COVER	1
9	14-00-191-007	PLUG-SHIPING	1
8	60115113	BOLT-HEX HEAD	#
7	10-00-041-002	COMPOUND-SEALING	1 PCS
6	60118306	BOLT-WHEEL	1
5	6193223	HUB	9
4	613313	BEARING-CUP	1
3	613312	BEARING-CONE	1
2	604437	Output Shaft Seal	1
1	6171213	SHAFT-OUTPUT	1

NOTES

SPIN TEST TO BE POWER OPERATED
SUN GEAR MUST TURN FREE BY HAND
USE PACKING SPECIFICATION PP-298

NAME (Last, first, middle initial) Mr. J. Edgar Hoover		ADDRESS 400 ... Washington, D.C. 20535	
PHONE (Area code and number) 202-452-3000		FAX (Area code and number) 202-452-3000	
TITLE Director		ORGANIZATION Federal Bureau of Investigation	
DATE 10/15/93		TIME 10:00 AM	
FROM Mr. J. Edgar Hoover		TO Mr. J. Edgar Hoover	
SUBJECT	
BODY	
FOOTER	

